

Turkish Tiles

by Kim McLean

Australian quiltmaker Kim McLean used a wide variety of fabrics in the applique blocks she created for the outside border of her award-winning quilt. Check the following pages for four of the block designs. For the cover photo of the quilt, the article "On the Cover," and more block designs, see the November 2005 (#377) issue of *Quilter's Newsletter Magazine*.



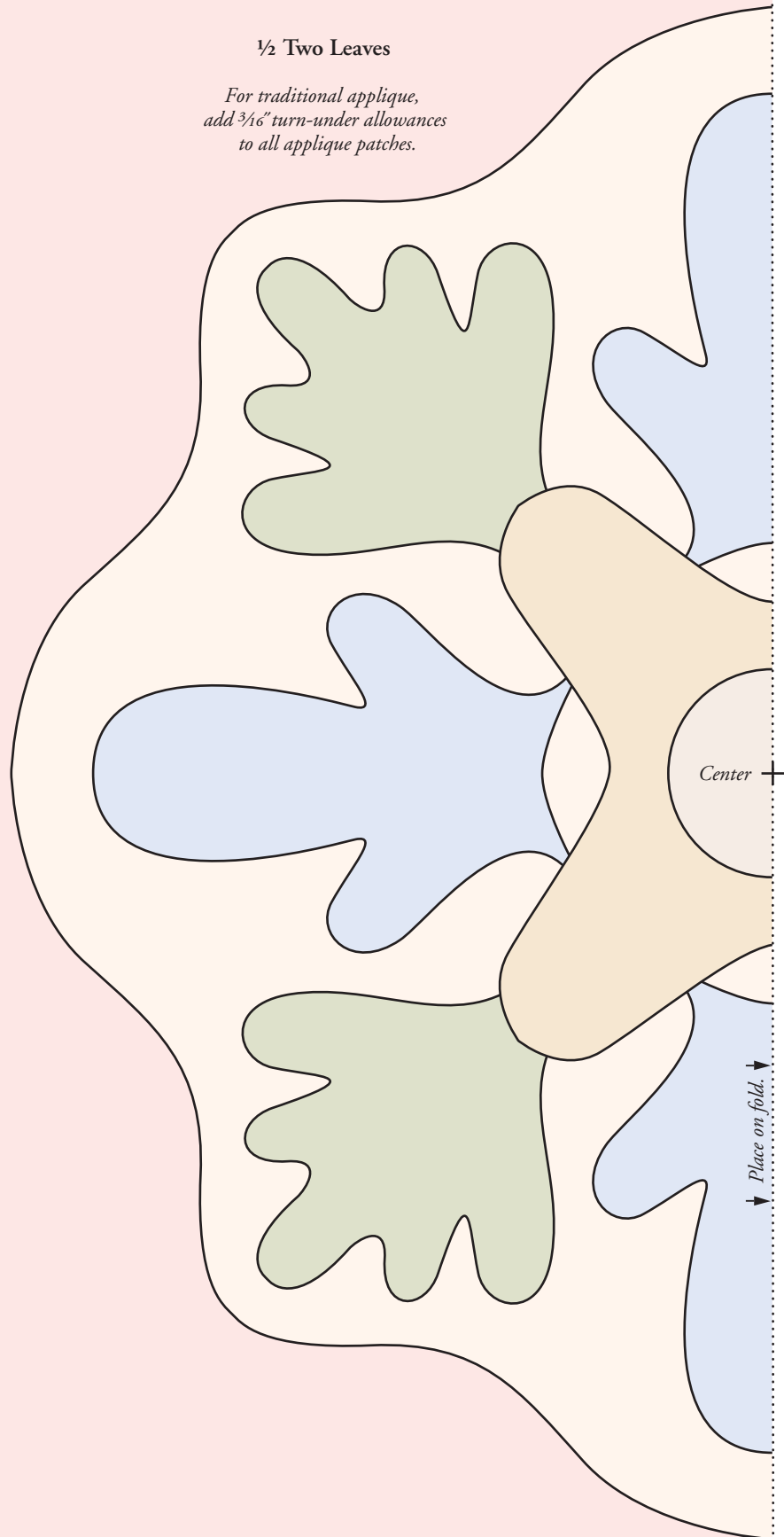
TWO LEAVES BLOCK

Designed by Kim McLean

The finished block will measure 10" x 10". For each block cut a square of background fabric at least 12" x 12"; trim to size with seam allowances when the block is finished. Fold in half and lightly crease each square vertically, horizontally, and on both diagonals to help position the design. Lightly trace the pattern onto the background square. Use your favorite method of applique to add the patches; if using traditional applique, be sure to add $\frac{3}{16}$ " turn-under allowances to all patches.

$\frac{1}{2}$ Two Leaves

For traditional applique, add $\frac{3}{16}$ " turn-under allowances to all applique patches.

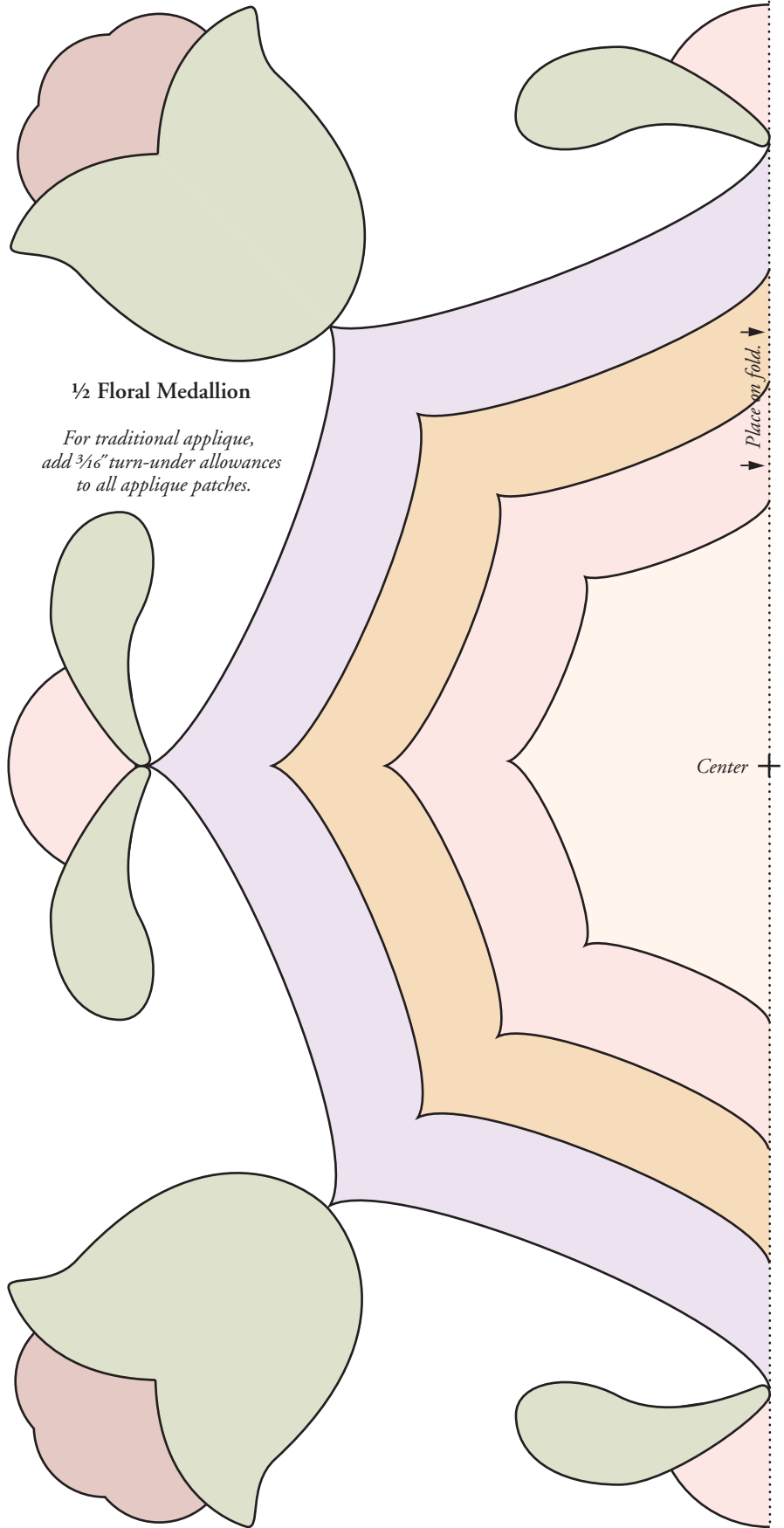




FLORAL MEDALLION BLOCK

Designed by Kim McLean

The finished block will measure 10" x 10". For each block cut a square of background fabric at least 12" x 12"; trim to size with seam allowances when the block is finished. Fold in half and lightly crease each square vertically, horizontally, and on both diagonals to help position the design. Lightly trace the pattern onto the background square. Use your favorite method of applique to add the patches; if using traditional applique, be sure to add $\frac{3}{16}$ " turn-under allowances to all patches.



1/2 Floral Medallion

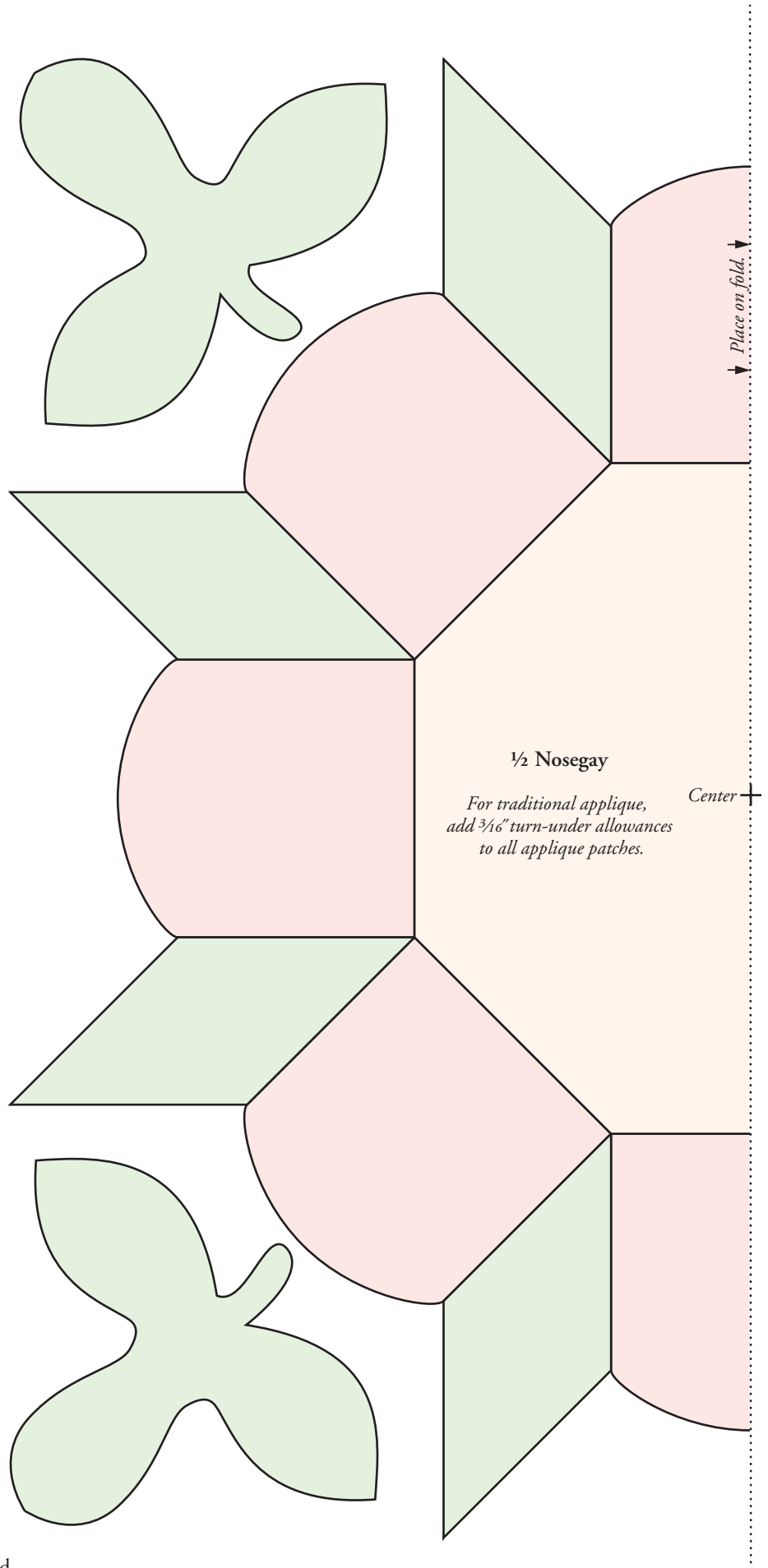
For traditional applique, add $\frac{3}{16}$ " turn-under allowances to all applique patches.



NOSEGAY BLOCK

Designed by Kim McLean

The finished block will measure 10" x 10". For each block cut a square of background fabric at least 12" x 12"; trim to size with seam allowances when the block is finished. Fold in half and lightly crease each square vertically, horizontally, and on both diagonals to help position the design. Lightly trace the pattern onto the background square. Use your favorite method of applique to add the patches; if using traditional applique, be sure to add $\frac{3}{16}$ " turn-under allowances to all patches.





ROSEBUD MEDALLION

Designed by Kim McLean

The finished block will measure 10" x 10". For each block cut a square of background fabric at least 12" x 12"; trim to size with seam allowances when the block is finished. Fold in half and lightly crease each square vertically, horizontally, and on both diagonals to help position the design. Lightly trace the pattern onto the background square. Use your favorite method of applique to add the patches; if using traditional applique, be sure to add $\frac{3}{16}$ " turn-under allowances to all applique patches.

$\frac{1}{2}$ Rosebud Medallion

For traditional applique, add $\frac{3}{16}$ " turn-under allowances to all applique patches.

